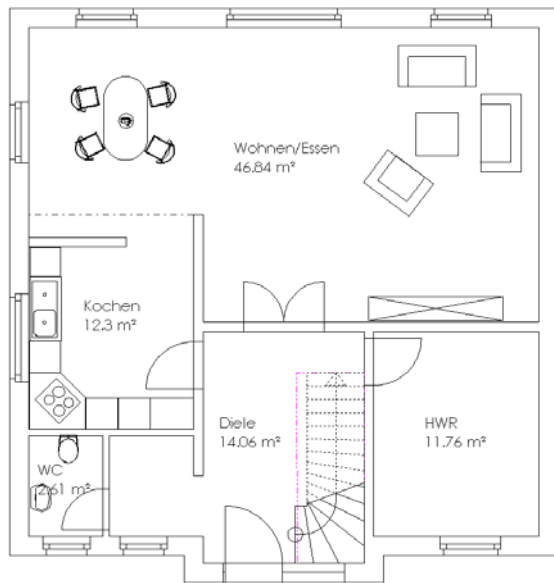
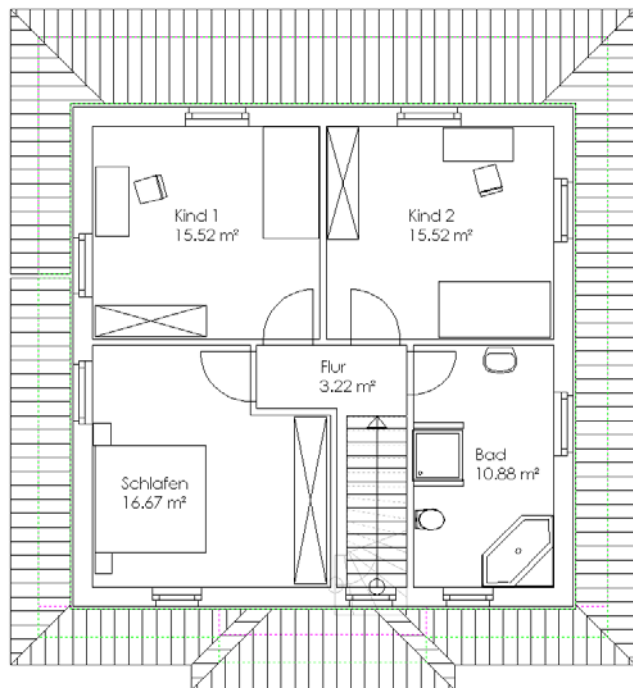


- Haus Ibiza -



Erdgeschoss Grundriss



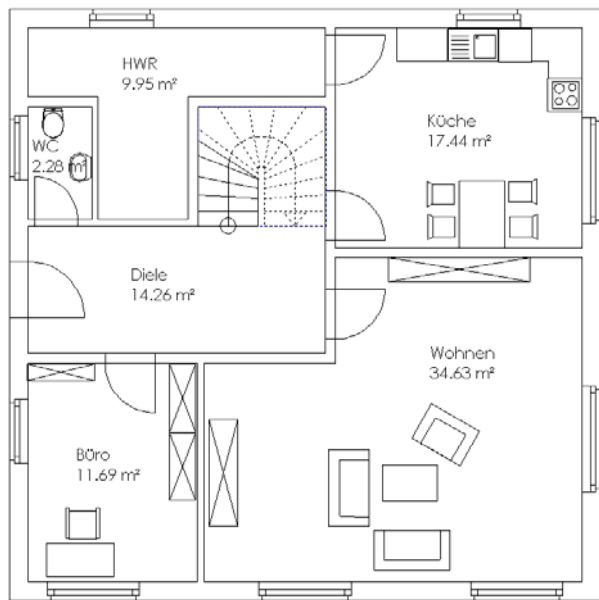
Obergeschoss Grundriss

EG	=	87,57 m ²
OG	=	61,81 m ²
Wohnfläche gesamt	=	149,38 m²

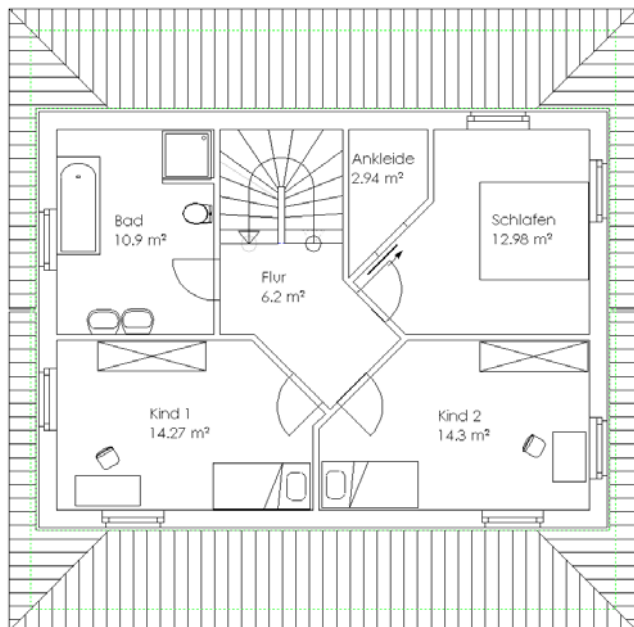
JOHN 

- Massivhaus

- Haus Madrid -



Erdgeschoss Grundriss



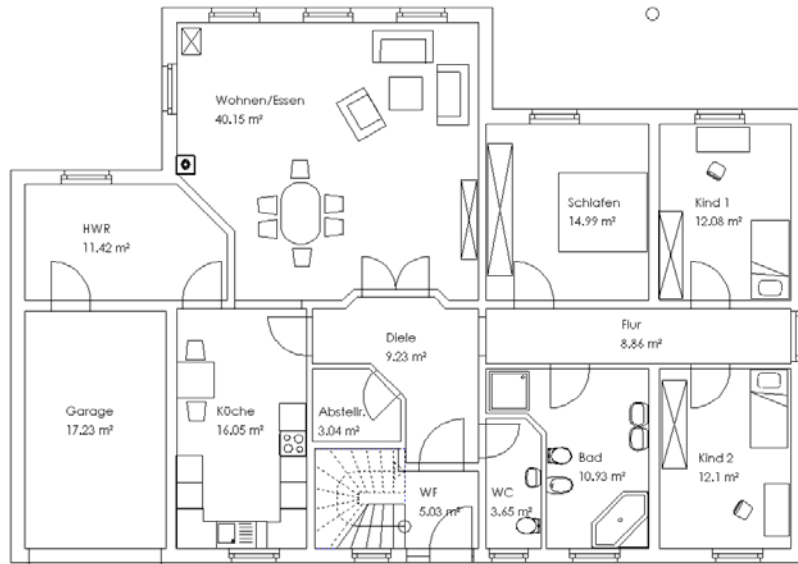
Obergeschoss Grundriss

EG	=	90,25 m ²
OG	=	61,59 m ²
Wohnfläche gesamt	=	151,84 m²

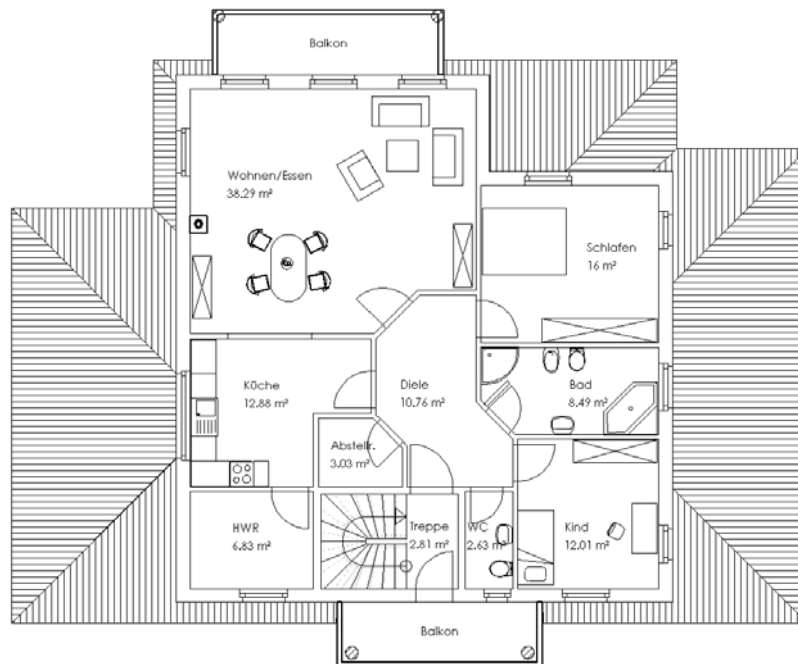


- Massivhaus

- Haus Sevilla -



Erdgeschoss Grundriss



Obergeschoss Grundriss

EG	= 147,53 m ²
DG	= 117,77 m ²
Wohnfläche gesamt	= 265,30 m²

JOHN 

- Massivhaus