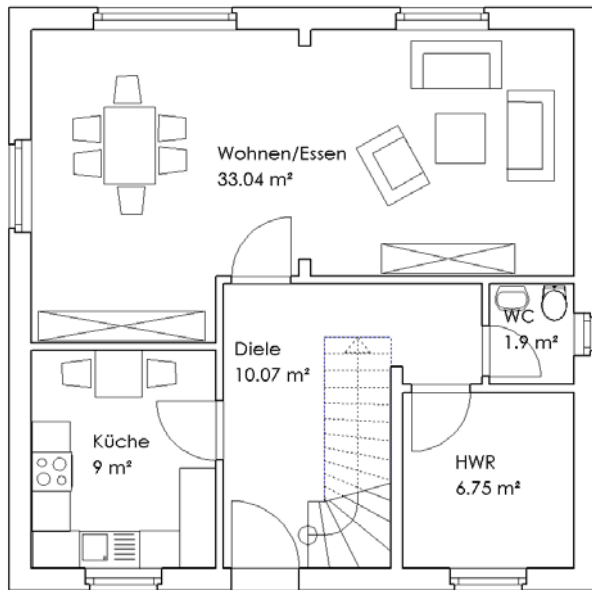
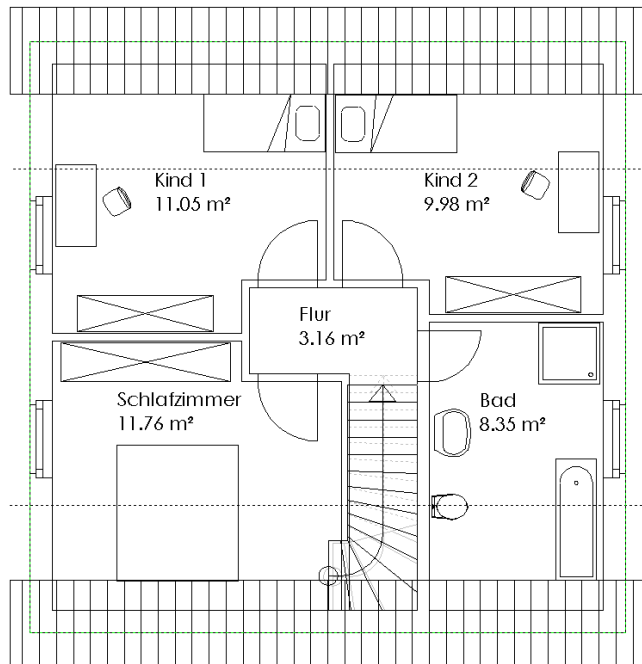


- Primus I -



Erdgeschoss Grundriss



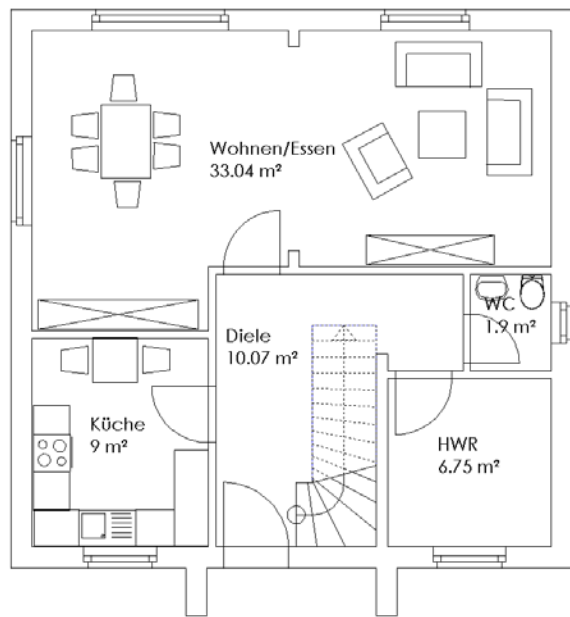
Obergeschoss Grundriss

EG	=	60,76 m ²
OG	=	44,30 m ²
Wohnfläche gesamt	=	105,06 m²

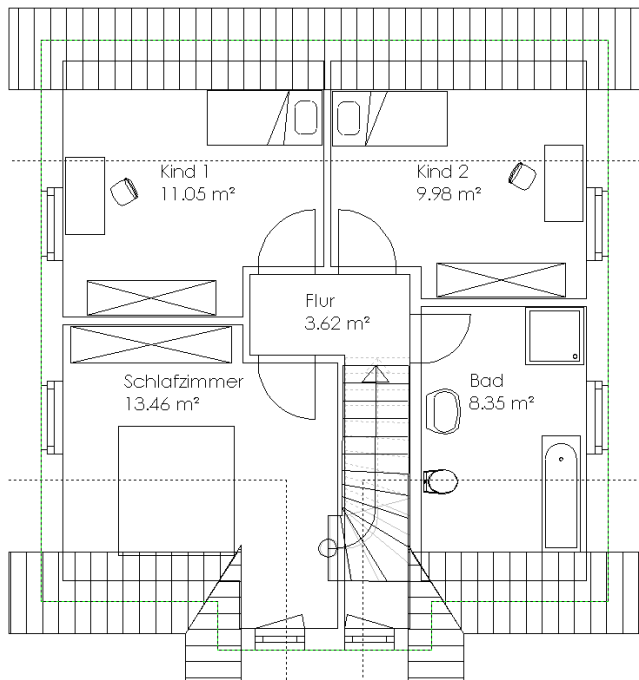
JOHN 

- Massivhaus

- Primus II -



Erdgeschoss Grundriss



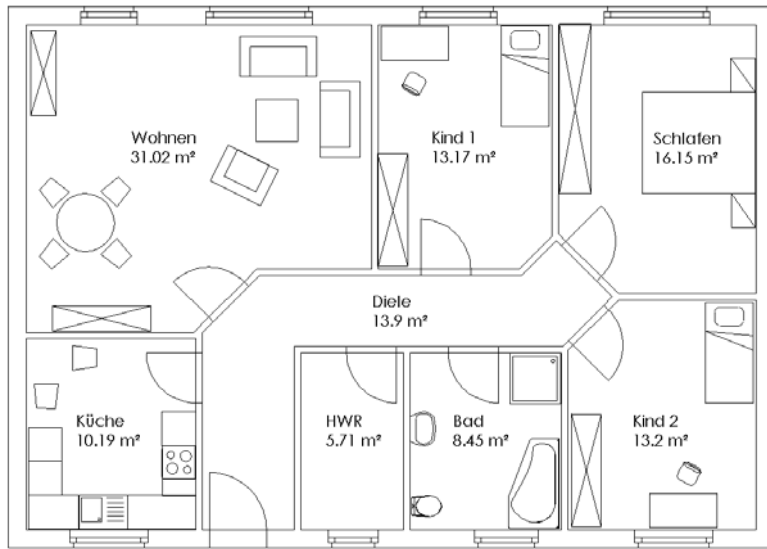
Obergeschoss Grundriss

EG	=	60,76 m ²
DG	=	46,46 m ²
Wohnfläche gesamt	=	107,22 m²

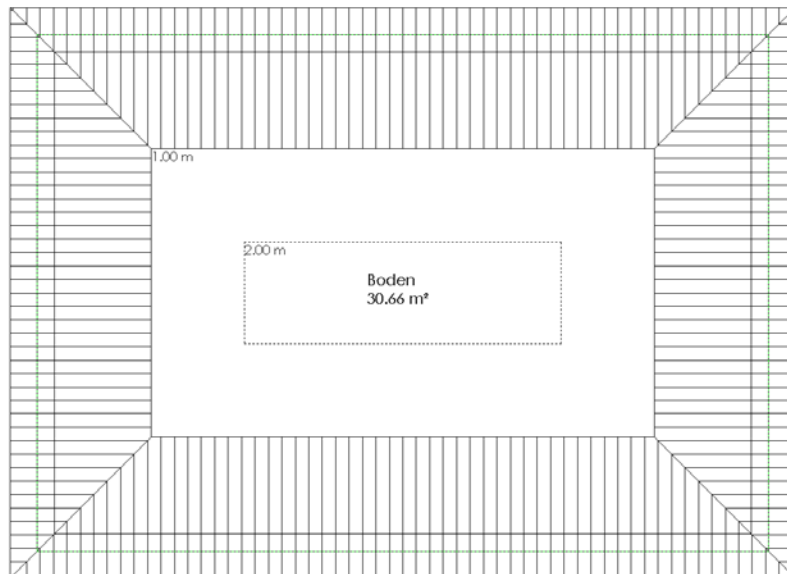
JOHN 

- Massivhaus

- Primus III -



Erdgeschoss Grundriss



Dachboden Grundriss

EG	= 111,79 m ²
Wohnfläche gesamt	= 111,79 m²
Dachboden	= 30,66 m ²



- Massivhaus